



Thermo Scientific

GRAMS Envision

Version 2.0

Installation Guide

Revision A



© 2010 Thermo Fisher Scientific Inc. All rights reserved.

Thermo Fisher Scientific Inc. provides this document to its customers with a product purchase to use in the product operation. This document is copyright protected and any reproduction of the whole or any part of this document is strictly prohibited, except with the written authorization of Thermo Fisher Scientific Inc.

The contents of this document are subject to change without notice. All technical information in this document is for reference purposes only. System configurations and specifications in this document supersede all previous information received by the purchaser.

Thermo Fisher Scientific Inc. makes no representations that this document is complete, accurate or error-free and assumes no responsibility and will not be liable for any errors, omissions, damage or loss that might result from any use of this document, even if the information in the document is followed properly.

This document is not part of any sales contract between Thermo Fisher Scientific Inc. and a purchaser. This document shall in no way govern or modify any Terms and Conditions of Sale, which Terms and Conditions of Sale shall govern all conflicting information between the two documents.

All trademarks recognized.

Your Comments

Thermo Fisher Scientific is interested in receiving any comments you have regarding this manual.

Comments should be sent to:

sidinf.documentation@thermofisher.com

Notes

Contents

| | | |
|-----------|--|-----------|
| 1. | Introduction | 1 |
| | System Requirements | 2 |
| | Hardware | 2 |
| | Software | 2 |
| | Before Installation | 3 |
| 2. | Installing Envision | 5 |
| | Upgrading Envision | 8 |
| 3. | Installing the GRAMS Converters | 9 |
| | Upgrading the GRAMS Converters | 11 |
| 4. | Licensing Envision..... | 13 |
| | Requesting an Envision License..... | 14 |
| | Selecting an Envision License..... | 17 |
| | Specifying a License File..... | 18 |
| | Specifying a License Server | 19 |
| | Licensing the GRAMS Converters | 20 |
| 5. | Maintaining Envision..... | 21 |
| | Repairing the Envision Application..... | 22 |
| | Uninstalling Envision..... | 24 |
| | Repairing the GRAMS Converters..... | 26 |
| | Uninstalling the GRAMS Converters..... | 27 |

Contents

Notes

1. Introduction

GRAMS Envision (hereafter referred to as 'Envision') should be installed by a system administrator if it is to be run over a network, or by a suitably authorized user if it is to be installed on a single PC.

This manual contains details of:

- Installing Envision
- Installing the GRAMS converters
- Requesting an Envision license
- Maintaining Envision and the GRAMS converters

Before starting to install Envision, please ensure that you are familiar with the application's hardware and software requirements, and that you have read the 'Before Installation' section of this chapter.

System Requirements

This section describes the hardware and software requirements for the Envision installation.

Hardware

The Envision application has the following hardware requirements:

| Item | Description |
|--------------------|---|
| PC | 600 MHz processor or above. |
| RAM | 256 MB or higher. |
| Display Resolution | 1024 x 768 with 256 colors or better. |
| Storage | The full Envision installation requires 13 MB of disk space, with a further 50 MB for the converters. The Microsoft .NET Framework redistributable requires a further 200 MB and will be downloaded automatically, if required, by the Envision installer. |

Software

The Envision application has been tested on the following operating systems:

- Microsoft Windows XP Professional
- Microsoft Windows Vista Enterprise Edition
- Microsoft Windows 2003 Server Standard Edition SP2 with Terminal Services + Citrix XenApp 5.0, *connecting using* Microsoft Windows Vista Enterprise Edition + Citrix Windows ICA Client 10.200

Before Installation Prior to installing Envision:

- Close all programs before beginning the installation, to ensure that files are updated properly.
- If you are installing Envision on a network, verify that you have administrator privileges. If you are installing Envision on a single (stand-alone) PC, make sure that you have adequate user permissions.
- If you are using runtime anti-virus software such as Microsoft Security Essentials or Symantec Norton AntiVirus, it is advisable to turn it off before installing Envision.

Notes

2. Installing Envision

Before starting to install GRAMS Envision, please ensure that you have read the introductory chapter of this manual.

The Envision application is installed from the GRAMS Envision installation kit:

1. Locate and run 'setup.exe'.

Depending on your security settings, one or more security warnings or confirmation dialog boxes may be displayed.

Typically, you will have to click on a Run button (or similar) to continue the installation.

Note If an internet security warning is displayed, it should indicate that the Publisher of the installation executable is 'Thermo Fisher Scientific'. ▲

2. The Envision GAML Viewer InstallShield Wizard is started:

- a. **Preparing to Install**

While the installation package is being prepared, a progress bar is displayed.

Note If the Microsoft .NET Framework is not already installed on your system, you will be prompted to install it at this point. Follow the instructions on the Microsoft .NET Framework 2.0 Setup Wizard. ▲

- b. **Welcome**

This screen is displayed when the wizard is ready to start the installation. Click on the Next button to continue.

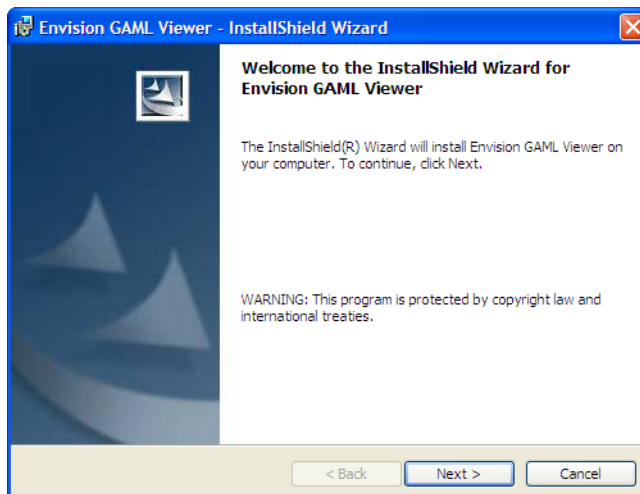


Figure 1-1. Envision GAML Viewer InstallShield Wizard — Welcome Screen

c. **License Agreement**

Read and accept the terms of the license agreement, and then click on the Next button to continue.

If required, you can print the entire license agreement using the Print button.

d. **Destination Folder**

Specify an installation folder for the Envision application. You can accept the default installation folder, or use the Change... button to specify a custom installation folder.

Click on the Next button to continue.

e. **Ready to Install the Program**

At this point, the wizard has all the information it requires for your installation.

Click on the Install button to continue with the installation, or click on the Back button if you want to make any changes to your selections.

Note If you are installing Envision on Windows Vista, a User Account Control dialog box may be displayed,

requesting permission to continue with the installation. Check the details displayed on the dialog box, and Click on the Continue button. ▲

f. **Installing Envision GAML Viewer**

This screen displays a progress bar, indicating the progress of the installation.

g. **InstallShield Wizard Completed**

Click on the Finish button to close the wizard.

You are now ready to license Envision. See this manual's *Licensing Envision* chapter for more details.

Before using Envision, you should install the latest version of the GRAMS Converters package. See this manual's *Installing the GRAMS Converters* chapter for more details.

Upgrading Envision

To upgrade from a previous version of Envision:

1. Back up any important data, and then uninstall the old version of Envision.

You can use either the Windows Control Panel's Add or Remove Programs application, or the Envision Setup Wizard.

2. Check that the Envision program folder has been removed.

By default, Envision will have been installed in the following location:

C:\Program Files\Thermo\Envision

If this folder has not been removed, you should remove it manually.

3. Install the new version of Envision, as described earlier in this chapter.

3. Installing the GRAMS Converters

Once you have installed the Envision application, you should install the latest version of the GRAMS instrument data file converters.

The Envision installation kit includes an installation package for the GRAMS converters:

1. Locate and run 'GRAMS Converters Package.msi'.

Depending on your security settings, one or more security warnings or confirmation dialog boxes may be displayed.

Typically, you will have to click on a Run button (or similar) to continue the installation.

2. The GRAMS Converters Package InstallShield Wizard is started:

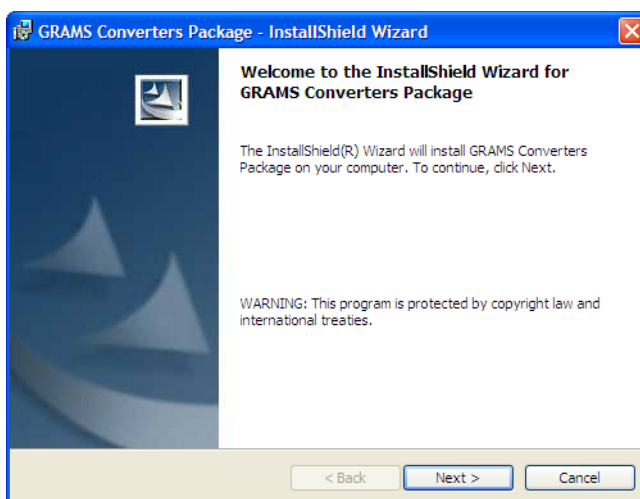


Figure 2-1. GAML Converters Package Setup Wizard — Welcome Screen

a. **Welcome**

This screen is displayed when the wizard is ready to start the installation. Click on the Next button to continue.

b. **License Agreement**

Read and accept the terms of the license agreement, and then click on the Next button to continue.

If required, you can print the entire license agreement using the Print button.

c. **Ready to Install the Program**

At this point, the wizard has all the information it requires for your installation.

Click on the Install button to continue with the installation, or click on the Back button if you want to make any changes to your selections.

Note If you are installing the GRAMS converters on Windows Vista, a User Account Control dialog box may be displayed, requesting permission to continue with the installation. Check the details displayed on the dialog box, and Click on the Continue button. ▲

d. **Installing GRAMS Converters Package**

This screen displays a progress bar, indicating the progress of the installation.

e. **Installation Wizard Completed**

Click on the Finish button to close the wizard.

Upgrading the GRAMS Converters

If you have an older version of the GRAMS converters installed, you must uninstall them before attempting to install the latest version.

Notes

4. Licensing Envision

Envision is protected by the Macrovision FLEXnet security system. This encodes a license to a specific machine using a unique MAC address from one of its network adapters.

Envision can use two types of licensing:

- File-based — Envision checks a specified license file for valid license details.
- Server-based — Envision queries a license server for valid license details.

Server-based licensing requires a Thermo Licensing Server installation, either on your local PC or on a network PC. Refer to the Thermo Licensing Server user documentation.

The instructions in this chapter describe the following processes:

- Requesting a license for the Envision application.
- Selecting an existing license to use for Envision.
- Licensing the GRAMS converters.

Note Until you have a valid license, you will only be able to run Envision in Demo Mode. In this mode, you will be able to open and view GAML files, but many Envision features will be disabled. ▲


Requesting an Envision License

If you do not have a license for your Envision software, you must request a license from Thermo Fisher Scientific. To do this, you will need to obtain certain details.

To request a license:

1. Start the Envision application, using either of the following methods:
 - From the Windows Start menu, select All Programs/Thermo GRAMS Suite/Envision,

OR

 - Double click on the Envision shortcut  on your Windows desktop or Quick Launch bar (if these shortcuts have been created).

If you are running Envision for the first time, the Select License dialog box is displayed:

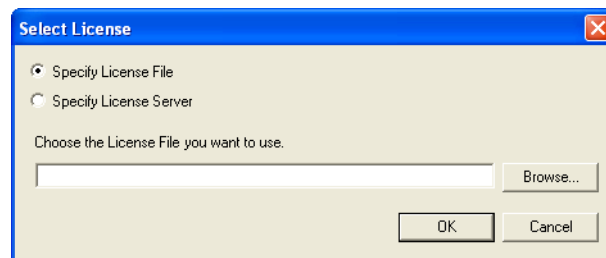


Figure 4-1. Select License Dialog Box

2. If you do not have a valid license file or server, click on the Cancel button to close this dialog box.

Note If you already have a valid license file or server, you should specify it now. See [Selecting an Envision License](#). ▲

A License Failure message is displayed:

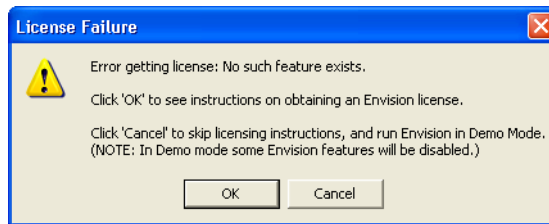


Figure 4-2. License Failure Message

3. Click on the OK button to continue.

The Request License window is displayed:

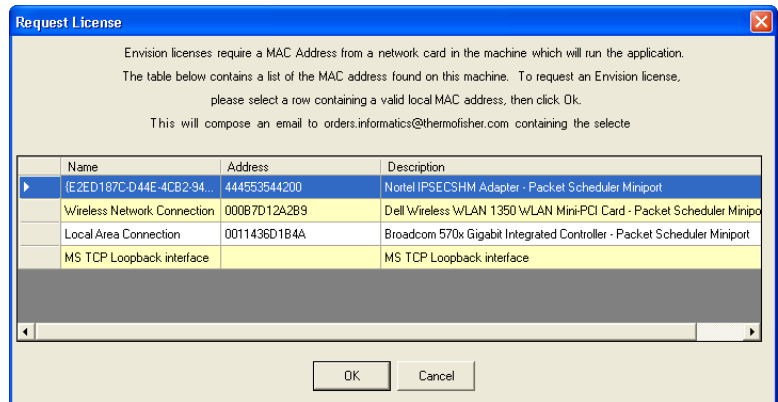


Figure 4-3. Request License Window

The Request License window displays a list of network adapters on your PC, along with their MAC addresses.

4. Follow the instructions in the Request License window to select an appropriate network adapter (and its MAC address), and then click on the OK button.

Note It is important that you select a permanent physical network adapter, e.g. your Local Area Connection, as the license will be tied to its MAC address. ▲

Your email program opens automatically, with an email pre-populated with the required details.

Note The Envision application also opens, in Demo Mode.



5. Edit the email as required, and click on your email program's Send button (or equivalent) to send the request.

Thermo Fisher Scientific will use your details to generate a license file and send it to you.

Once you have received your license file, you need to save it to a suitable location and then select it for use by Envision. See [Selecting an Envision License](#).

Further instructions for licensing your Envision product will also be supplied when your license is issued.

Selecting an Envision License

If you have a valid license set up for your Envision software, or if you have just received one, you must select it for use with Envision.

To select a license:

1. Start the Envision application, and select Help / About GRAMS Envision from the main menu.

The About GRAMS Envision dialog box is displayed:

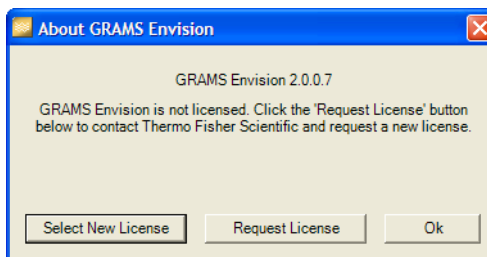


Figure 4-4. About GRAMS Envision Dialog Box

2. Click on the Select New License button.

The Select License dialog box is displayed:

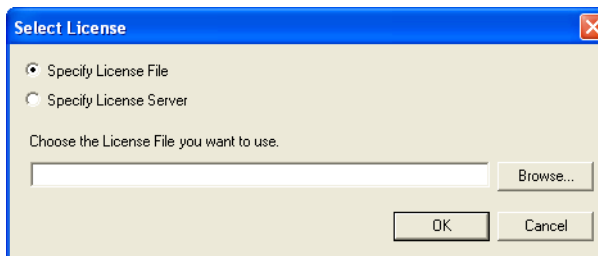


Figure 4-5. Select License Dialog Box

Note If you have *never* selected a valid Envision license, this dialog box is also displayed when you start the Envision application. ▲

3. Specify either a valid license file, or a license server that has been set up to use your Envision license.

See the [Specifying a License File](#) and [Specifying a License Server](#) sections.

4. Once you have specified your license file or server and clicked on the Select License dialog box's OK button, a 'Successfully updated license file' message is displayed.

Click on the message's OK button to return to the Envision application.

The next time you start Envision, it will attempt to use the specified license file or server.

Specifying a License File

To specify a license *file*:

1. In the Select License dialog box, select the 'Specify License File' option.

2. If you have not already done so, save your license file to a suitable location, e.g. your Envision program folder.

The license file will have the extension '.lic', and will typically be named 'Envision.lic'.

3. Use the Browse button to specify the required license file.

The file's path and name are displayed in the 'Choose the License File...' field.

4. Click on the Select License dialog box's OK button.

Specifying a License Server

To specify a license *server*:

1. In the Select License dialog box, select the 'Specify License Server' option.
2. If you have not already done so, set up your license server to use your Envision license.

You typically need to copy a server-based Envision license file to your license server PC, and then set up that server's instance of the Thermo Licensing Server to use it. Refer to the Thermo Licensing Server user documentation.

3. In the 'Enter the Computer Name...' field, enter the network name of your license server, e.g. 'licenseserver01'.
4. Click on the Select License dialog box's OK button.

Licensing the GRAMS Converters

For most Envision users, the GRAMS converters will not require separate licensing.

If your system has specific licensing needs, or requires certain converters, you may need to install separate license files (in addition to your Envision license file).

Contact Thermo Fisher Scientific for more details. Further instructions for licensing your converters will be supplied when your license is issued.

5. Maintaining Envision

This chapter provides information about maintaining your Envision application and the GRAMS Converters.

This chapter contains the following sections:

- Repairing the Envision application
- Uninstalling Envision
- Repairing the GRAMS converters
- Uninstalling the GRAMS converters

Repairing the Envision Application

If you run the Envision InstallShield Wizard on a system where Envision has already been installed successfully, it will offer a 'Repair' option that reinstalls all Envision files.

To repair an Envision installation:

1. From the GRAMS Envision installation kit, locate and run 'setup.exe'.

Depending on your security settings, one or more security warnings or confirmation dialog boxes may be displayed.

Typically, you will have to click on a Run button (or similar) to continue the installation.

2. The Envision GAML Viewer InstallShield Wizard is started:

- a. **Preparing to Install**

While the installation package is being prepared, a progress bar is displayed.

- b. **Welcome**

This screen is displayed when the wizard is ready to start the installation. Click on the Next button to continue.

- c. **Program Maintenance**

Select the 'Repair' option, and click on the Next button to continue.

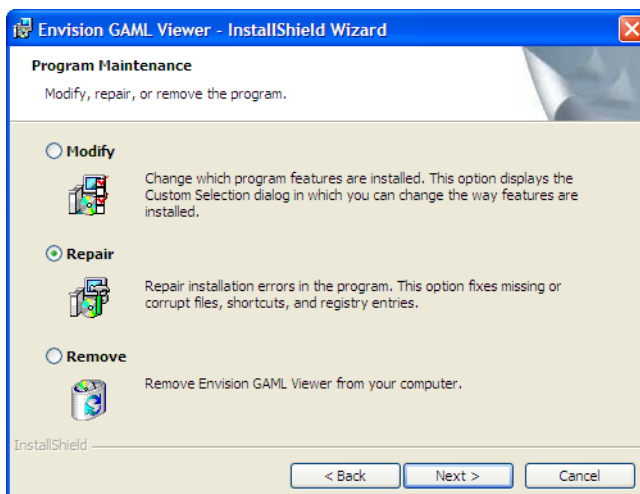


Figure 5-1. Envision GAML Viewer InstallShield Wizard — Program Maintenance Screen

- d. **Ready to Repair the Program**

At this point, the wizard has all the information it requires. Click on the Install button to repair your Envision installation.
- e. **Installing Envision GAML Viewer**

This screen displays a progress bar, indicating the progress of the installation.
- f. **InstallShield Wizard Completed**

Click on the Finish button to close the wizard.

Uninstalling Envision

If you run the Envision InstallShield Wizard on a system where Envision has already been installed successfully, it will offer a 'Remove' option that uninstalls the application.

To uninstall Envision:

1. From the GRAMS Envision installation kit, locate and run 'setup.exe'.

Depending on your security settings, one or more security warnings or confirmation dialog boxes may be displayed.

Typically, you will have to click on a Run button to continue the installation.

Note You can also uninstall Envision from the Windows Control Panel's Add or Remove Programs application. This method will remove the application immediately, i.e. without opening the Envision InstallShield Wizard. ▲

2. The Envision GAML Viewer InstallShield Wizard is started:
 - a. **Preparing to Install**
While the installation package is being prepared, a progress bar is displayed.
 - b. **Welcome**
This screen is displayed when the wizard is ready to start the installation. Click on the Next button to continue.
 - c. **Program Maintenance**
Select the 'Remove' option, and click on the Next button to continue.
 - d. **Remove the Program**
At this point, the wizard has all the information it requires. Click on the Remove button to uninstall Envision.

e. **Uninstalling Envision GAML Viewer**

This screen displays a progress bar, indicating the progress of the uninstallation process.

Note Clicking on the Cancel button will abort the uninstall request, and return your Envision installation to its original state. ▲

f. **InstallShield Wizard Completed**

Click on the Finish button to close the wizard.

Repairing the GRAMS Converters

If you run the GRAMS Converters Package InstallShield Wizard on a system where the converters have already been installed successfully, it will offer a 'Repair' option that reinstalls all GRAMS converters in the package.

To repair the GRAMS Converters:

1. From the Envision installation kit, locate and run 'GRAMS Converters Package.msi'.

Depending on your security settings, one or more security warnings or confirmation dialog boxes may be displayed.

Typically, you will have to click on a Run button to continue the installation.

2. The GRAMS Converters Package InstallShield Wizard is started:

- a. **Welcome**

This screen is displayed when the wizard is ready to start the installation. Click on the Next button to continue.

- b. **Program Maintenance**

Select the 'Repair' option to repair your GRAMS converters, and click on the Next button to continue.

- c. **Ready to Repair the Program**

At this point, the wizard has all the information it requires. Click on the Install button to repair your GRAMS converters.

- d. **Installing GRAMS Converters Package**

This screen displays a progress bar, indicating the progress of the installation.

- e. **InstallShield Wizard Completed**

Click on the Finish button to close the wizard.

Uninstalling the GRAMS Converters

If you run the GRAMS Converters Package InstallShield Wizard on a system where the converters have already been installed successfully, it will offer a 'Remove' option that uninstalls all GRAMS converters in the package.

To uninstall the GRAMS converters package:

1. From the Envision installation kit, locate and run 'GRAMS Converters Package.msi'.

Depending on your security settings, one or more security warnings or confirmation dialog boxes may be displayed.

Typically, you will have to click on a Run button to continue the installation.

2. The GRAMS Converters Package InstallShield Wizard is started:
 - a. **Welcome**
This screen is displayed when the wizard is ready to start the installation. Click on the Next button to continue.
 - b. **Program Maintenance**
Select the 'Remove' option to remove your GRAMS converters, and click on the Next button to continue.
 - c. **Remove the Program**
At this point, the wizard has all the information it requires. Click on the Remove button to uninstall the GRAMS converters.
 - d. **Uninstalling GRAMS Converters Package**
This screen displays a progress bar, indicating the progress of the uninstallation process.

Note Clicking on the Cancel button will abort the uninstall request, and return your GRAMS Converters package to its original state. ▲

- e. **InstallShield Wizard Completed**
Click on the Finish button to close the wizard.