



Thermo Scientific

GRAMS Suite

Version 9.0

Welcome Guide

Revision A

© 2010 Thermo Fisher Scientific Inc. All rights reserved.

Thermo Fisher Scientific Inc. provides this document to its customers with a product purchase to use in the product operation. This document is copyright protected and any reproduction of the whole or any part of this document is strictly prohibited, except with the written authorization of Thermo Fisher Scientific Inc.

The contents of this document are subject to change without notice. All technical information in this document is for reference purposes only. System configurations and specifications in this document supersede all previous information received by the purchaser.

Thermo Fisher Scientific Inc. makes no representations that this document is complete, accurate or error-free and assumes no responsibility and will not be liable for any errors, omissions, damage or loss that might result from any use of this document, even if the information in the document is followed properly.

This document is not part of any sales contract between Thermo Fisher Scientific Inc. and a purchaser. This document shall in no way govern or modify any Terms and Conditions of Sale, which Terms and Conditions of Sale shall govern all conflicting information between the two documents.

Contents

Welcome to GRAMS Suite 9.0	1
GRAMS Convert	1
GRAMS IQ	1
Component Applications	2
Validation	2
Shipping Content	2
Installation	3
Feedback	3
System Requirements	4
Hardware	4
Software	4
Contents of the Installation Kit	5
Installation Instructions	6
Installing the GRAMS Suite	6
Installing the GRAMS Converters Package	12
Licensing the GRAMS Suite	13

Welcome to GRAMS Suite 9.0

I am delighted to present the latest edition of the GRAMS Suite. Based on your feedback we have updated the entire suite to support enhanced data import, provide compatibility for Windows Vista and simplify its install, uninstall and licensing.

We have enhanced the speed of a number of Array Basic programs and introduced two new stand-alone products to the suite:

- GRAMS Convert
- GRAMS IQ

GRAMS Convert

GRAMS Convert allows the bulk transformation of any supported instrument data files on your system to the industry standard GRAMS SPC format. It can intelligently scan multiple directories, converting known file formats into SPC format.

GRAMS IQ

GRAMS IQ is a simple graphical tool for chemometric model creation, maintaining the industry standard functionality of PLSplus/IQ and adding a 'step by step' graphical interface:

1. Import sample data using GRAMS Converters and reference data through a new 'matching wizard'.
2. Analyze the data graphically to determine the most informative regions and modeling parameters.
3. Define plots to test the model, identify outliers and areas for improvement. Build calibrations and reports.

Component Applications

The GRAMS Suite 9.0 comprises the following applications:

- GRAMS/AI 9.0
- GRAMS 3D 9.0
- Spectral ID 9.0
- Spectral DB 9.0
- GRAMS Convert 9.0
- GRAMS IQ 9.0
- Active Multifile Tool 9.0
- Excel Exchange 9.0
- IQ Predict 9.0
- QuickQuant 9.0

All of these applications are installed by the GRAMS Suite setup executable.

Validation

This release has been developed in line with Thermo Scientific's Quality Management System and, as part of the development process, has been tested on the following operating systems:

- Windows XP Professional SP3
- Windows Vista Professional

Shipping Content

GRAMS Suite 9.0 will be shipped on request to supported customers. The kit includes the latest GRAMS Suite software, accompanying tools, and product release notes in PDF format.

GRAMS Suite 9.0 can also be installed from the following download site:

<http://www.gramssuite.com/downloads>

Installation

Comprehensive installation instructions are included in this Welcome Guide. We recommend that you read the instructions carefully prior to installation.

Feedback

Thank you for choosing GRAMS Suite 9.0 and Thermo Scientific.

We are sure you will be extremely pleased with GRAMS Suite 9.0. Our aim, as always, is to deliver high quality software solutions to meet your laboratory requirements. Consequently, we are very interested in any suggestions you wish to make.

Please make comments via email to:

support@gramssuite.com

Alternately, you may reach us via our website:

<http://www.thermo.com/grams>

Regards,

A handwritten signature in black ink, appearing to read 'D. Joyce', with a stylized flourish at the end.

David Joyce
GRAMS Product Manager

System Requirements

This section contains details of the hardware and software requirements for the GRAMS Suite.

Hardware

The following table provides the minimum hardware requirements for the GRAMS Suite:

Hardware	Required	
Processor	Intel Pentium 600 MHz	
RAM	512 MB	
Hard Disk Space	GRAMS Suite	63 MB
	GRAMS Converters	26 MB
	Microsoft .NET Framework 2.0	200 MB
Display Resolution	1024 x 768 with 256 colors	

Software

The GRAMS Suite runs on the following operating systems:

- Windows XP Professional SP3
- Windows Vista Professional

In each case, the Microsoft .NET Framework 2.0 is required. If this is not already installed on your system, the GRAMS Suite's InstallShield wizard will install it for you.

Contents of the Installation Kit

The GRAMS Suite installation kit contains the following items:

- **GRAMS Suite setup executable**

To install the GRAMS Suite, you should run GRAMSSuiteSetup.exe.

The Microsoft .NET Framework 2.0 is embedded in this executable.

- **GRAMS Converters Package installation package**

To install the GRAMS Converters Package, you should run GRAMSConverters.msi.

- **GRAMS 9.0 Version Release Description (VRD)**

The VRD for this release, in PDF format, includes details of new functionality, corrected issues, etc.

- **README file**

A text file detailing any late updates and instructions for this release.

Installation Instructions

This section contains instructions for:

- Installing the GRAMS Suite
- Installing the GRAMS Converters Package
- Licensing the GRAMS Suite

Before installation, we strongly recommend that you close all programs (to ensure that files are updated properly), and verify that you have administrator privileges on the target PC.

Installing the GRAMS Suite

❖ To start the installation of the GRAMS Suite

1. Locate and run the ‘GRAMSSuiteSetup.exe’ setup executable.

If you have downloaded the file from the Internet, a security warning dialog may appear. This is a Microsoft feature designed to protect users from downloading files from unknown websites. The download for the GRAMS Suite software install will indicate that its Publisher is Thermo Fisher Scientific.

2. Click **Run** (or similar) on any security warning dialogs that appear.
3. The GRAMS Suite InstallShield wizard appears:

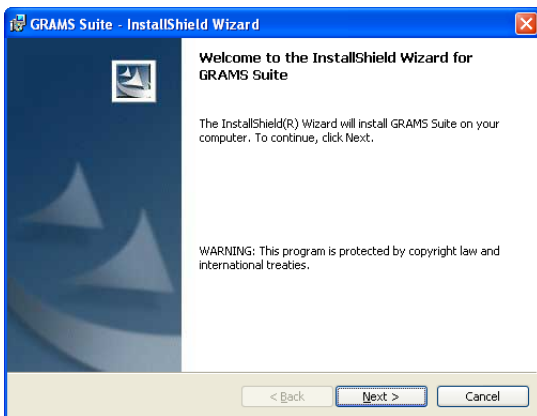
a. Preparing to Install

While the installation package is being prepared, a progress bar is displayed.

Note If the Microsoft .NET Framework is not already installed on your system, you will be prompted to install it at this point. Follow the instructions on the Microsoft .NET Framework 2.0 Setup wizard.

When the wizard is ready to start the GRAMS Suite installation, the Welcome Screen appears.

Figure 1. GRAMS Suite InstallShield wizard



b. Welcome

Click **Next** to continue.

c. License Agreement

Read and accept the terms of the license agreement, and then click **Next** to continue.

Note If required, you can print the entire license agreement using the **Print** button.

d. Destination Folder

Either use the default installation location, or use the **Change** button to install the GRAMS Suite to a different location, and then click **Next** to continue.

IMPORTANT Previous versions of the GRAMS Suite use the path 'C:\Program Files\Galactic' as their default installation folder. If you currently have an older version of the GRAMS Suite installed, do not use your existing Galactic folder for this installation. Instead, either accept the default location or select a new folder. The old Galactic folder can be deleted after GRAMS Suite 9.0 has been fully installed and tested.

Note The GRAMS Suite documentation refers to the default installation location. If a different location is used, please make a note of its path for future reference.

e. GRAMS Suite Data Destination Folder

This screen is used to specify the path used by the GRAMS Suite to save all information that can be modified during the operation of the applications.

Either use the default installation location, or use the **Change** button to specify a different location, and then click **Next** to continue

It is critical that the selected folder should allow write access to all GRAMS Suite users. Be sure to record the path that is selected. In many cases, it may be helpful to place the 'GRAMSSuiteData' folder in a short, easy-to-remember path

f. Ready to Install the Program

At this point, the InstallShield wizard has all the information it requires for your installation.

Click **Install** to complete the installation, or **Back** if you need to make any changes to your selections.

Note If you are installing GRAMS on Windows Vista, a User Account Control dialog may appear, requesting permission to continue with the installation. Click **Continue**.

g. Installing GRAMS Suite

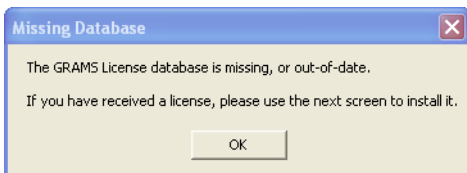
This screen contains a progress bar, indicating the progress of the GRAMS Suite installation.

When all files have been copied to your system, the GRAMS Configuration Manager is started.

Note After you have set up a license using the GRAMS Configuration Manager, you will return to the GRAMS Suite InstallShield Wizard.

4. If this is a new installation, the GRAMS Configuration Manager displays the following message:

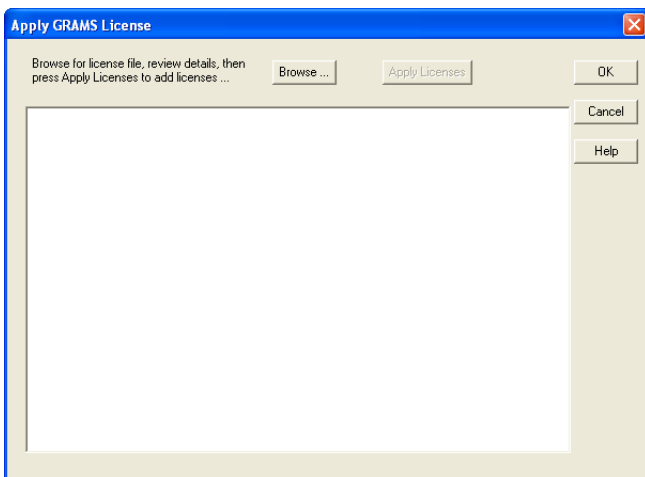
Figure 2. Missing Database message



Click **OK** to continue.

The Apply GRAMS License window appears.

Figure 3. Apply GRAMS License window



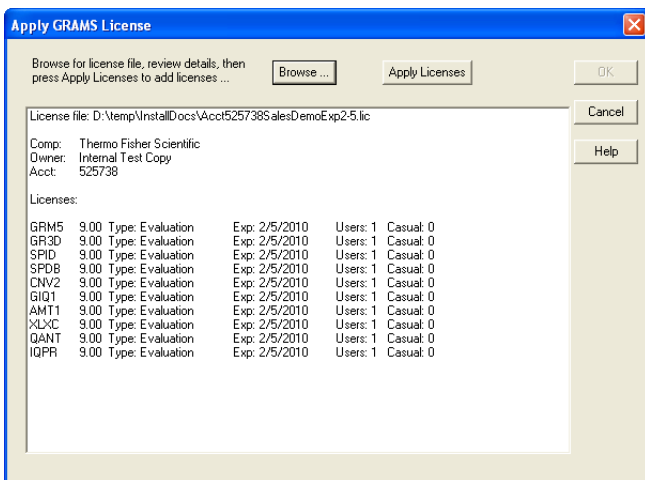
- Click **Browse** and select the appropriate license file for the GRAMS Suite.

If you have purchased the software, you will have received a license file as an email attachment. If you have registered for a trial version, use the downloaded license file. In either case, your license file will have an extension of '.lic'.

IMPORTANT It is a violation of the GRAMS Suite License Policy to apply a license file to more than one machine. If you need to have any of the GRAMS Suite applications installed on additional machines, please email the Sales department at sales@gramssuite.com.

After selecting the license file, the Apply GRAMS License window displays information about the license:

Figure 4. Apply GRAMS License window – License Information



- Check the license information to ensure that it is correct, and then click **Apply License** to license the relevant products.

The Apply GRAMS License window is updated to show the licenses being applied. If there were any errors, they will be displayed.

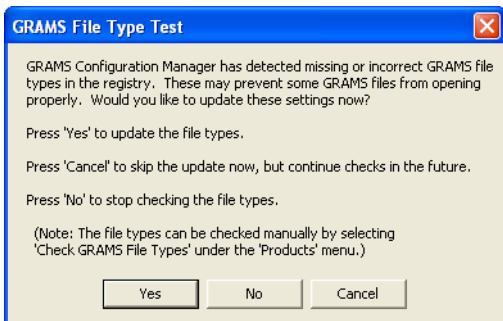
- Click **OK** to close the Apply GRAMS License window.

- The GRAMS Configuration Manager now checks the registry to verify that the GRAMS Suite file types are properly registered.

If it finds any extensions that are incorrectly identified, the following steps will occur:

- The GRAMS File Type Test dialog appears.

Figure 5. GRAMS File Type Test dialog



- Click **Yes** to register the file types.

Note If you are installing on Windows Vista, a User Account Control dialog may appear, requesting permission for the GRAMSAdmin.exe application to access your computer. Click **Allow**.

When file type registration is complete, a confirmation message appears.

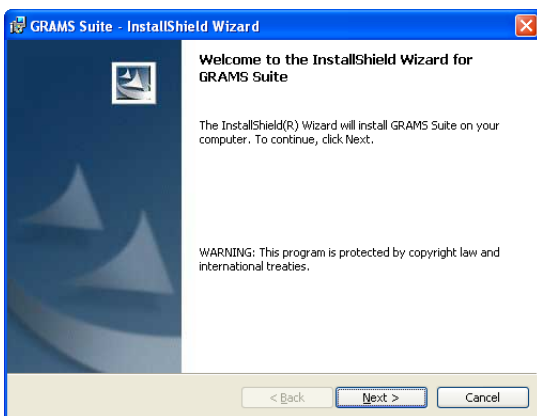
- Click **OK** to close the message.
- From the GRAMS Configuration Manager's File menu, choose **Exit** to close the application and return to the GRAMS Suite InstallShield wizard.
The Installation Wizard Completed screen appears.
 - Click **Finish** to close the InstallShield wizard and complete the installation.

Installing the GRAMS Converters Package

❖ To install the GRAMS Converters Package

1. Locate and double-click on the 'GRAMSConverters.msi' installation package.
2. Click **Run** (or similar) on any security warning dialogs that appear.
3. The GRAMS Converters Package InstallShield Wizard appears:

Figure 6. GRAMS Converters Package InstallShield wizard



a. Welcome

Click **Next** to continue.

b. License Agreement

Read and accept the terms of the license agreement, and then click **Next** to continue.

Note If required, you can print the entire license agreement using the **Print** button.

c. Ready to Install the Program

At this point, the InstallShield wizard has all the information it requires for your installation.

Click **Install** to complete the installation, or **Back** if you need to make any changes to your selections.

Note If you are installing on Windows Vista, a User Account Control dialog may appear, requesting permission to continue with the installation. Click **Continue**.

d. Installing GRAMS Converters Package

This screen contains a progress bar, indicating the progress of the GRAMS Converters Package installation.

When all files have been copied to your system, the Installation Wizard Completed screen appears.

e. Installation Wizard Completed

Click **Finish** to close the InstallShield wizard and complete the installation.

Licensing the GRAMS Suite

Some configurations of the GRAMS Suite are protected by the FLEXnet security system. This encodes a license to a specific PC using its network adapter's unique MAC address.

The instructions in this section describe the process to follow in order to request a FLEXnet license for the GRAMS Suite.

❖ To request a FLEXnet license for the GRAMS Suite

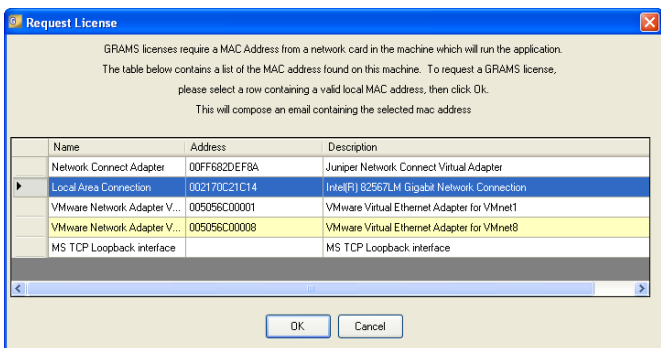
1. After applying the GRAMS Suite license file (as specified in the GRAMS Configuration Manager's Apply GRAMS License window), start one of the GRAMS Suite applications.

If a FLEXnet license is required, a 'FlexNet License Failure' message appears.

2. Click the message's **OK** button to continue.

The Request License dialog appears:

Figure 7. Request License dialog



This dialog shows a list of valid MAC addresses on the current PC.

3. Select a row that contains a valid MAC address.

IMPORTANT You must select an entry (MAC address) that will always be present, such as the MAC address of a physical network adapter. For example, entries labelled 'Local Area Connection' or 'Wireless Network Connection' are preferred. Entries that use the word 'Virtual' are unreliable, as they may not always be running, and they may change their MAC address each time they start up.

4. Click **OK** after selecting the MAC address.

Your email program opens automatically, with an email already populated with your account number and MAC address.

5. Click **Send** to email the request to sales@gramssuite.com.

Our Sales department will process your request and issue you with a valid license, including full instructions on installing it.